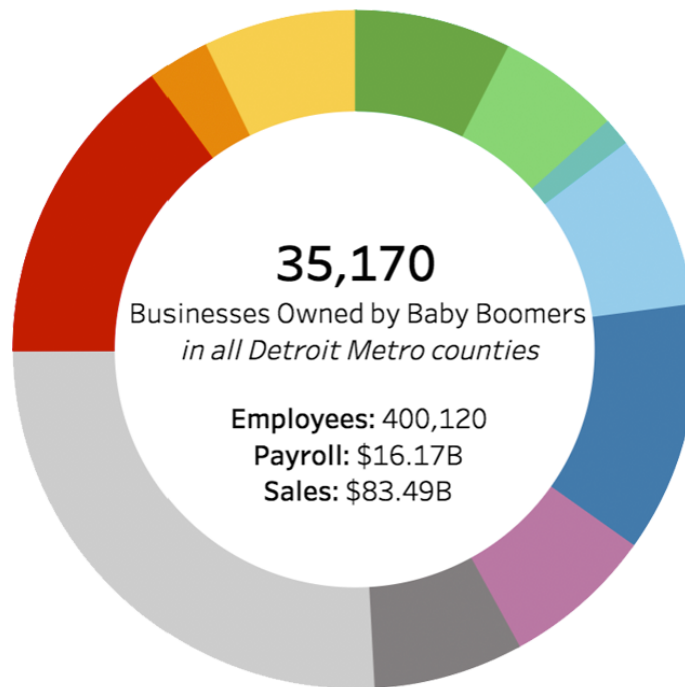


THE SMALL BUSINESS CLOSURE CRISIS



BABY BOOMERS OWN ALMOST
HALF OF ALL PRIVATELY- HELD
BUSINESSES IN THE 7-COUNTY

DETROIT REGION



35,170

Businesses Owned by Baby Boomers
in all Detroit Metro counties

Employees: 400,120

Payroll: \$16.17B

Sales: \$83.49B

Industry

- Accommodation and food services
- Admin & waste management
- Arts & entertainment
- Construction
- Health care & social assistance
- Manufacturing
- Other industries
- Professional services
- Retail trade
- Transportation & warehousing
- Wholesale trade

6 out of 10 business owners plan to sell their business in the next decade.

As most retire, our local business landscape is about to go through a dramatic shift.

CZBE
Center for
Community-Based Enterprise

project
{EQUITY}

SMALL BUSINESSES ARE THE LIFEBLOOD OF OUR ECONOMY

They make up 98.2% of all firms and provide 50.2% of all jobs in Michigan. In addition, they circulate 3x more money back into local communities than absentee-owned businesses and corporate chains.

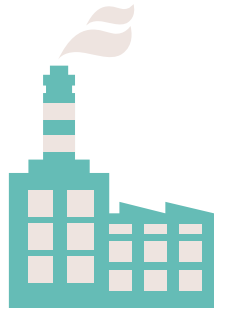
THE EMPLOYEE OWNERSHIP SOLUTION

Employee ownership deepens the impact of local businesses and keeps them locally-owned for the long term.

AND HELPS
COMMUNITIES
RETAIN SMALL
BUSINESSES

BENEFITS TO BUSINESSES

- Higher productivity and growth
- Lower employee turnover
- Improved longevity and lasting legacy



BENEFITS TO WORKERS

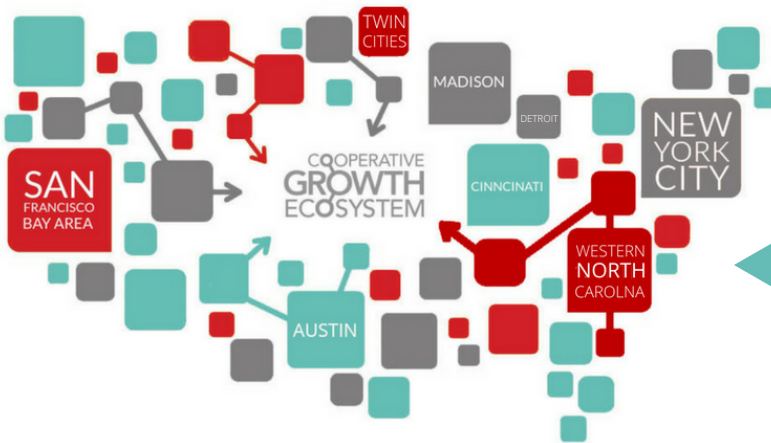
- Better pay and benefits
- Assets and business ownership
- Voice in key decisions



BENEFITS TO COMMUNITIES

- Increased local spending
- Heightened civic engagement
- Community wealth building

Let us help you track the impact of baby boomer retirements in your region and turn crisis into opportunity.



C2BE
Center for
Community-Based Enterprise

project
{EQUITY}

Interested in learning how businesses can transition to employee ownership and communities can keep good jobs?

C2BE.ORG
PROJECT-EQUITY.ORG